

CERAMIC

Aluminium Composite Panel



NEOBOND[®]

WILLIAMS COMPOSITE MATERIALS

CERAMIC



WCR-7847 Terracotta



WCR-7849 Ochre



WCR-7850 Mustard



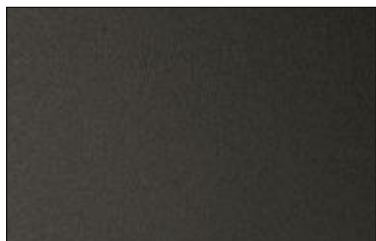
WCR-7840 Brown



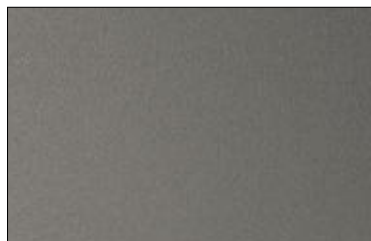
WCR-7842 Beige



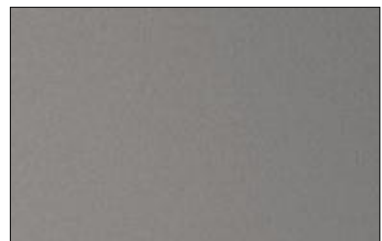
WCR-7846 Ivory



WCR-7845 Graphite Black



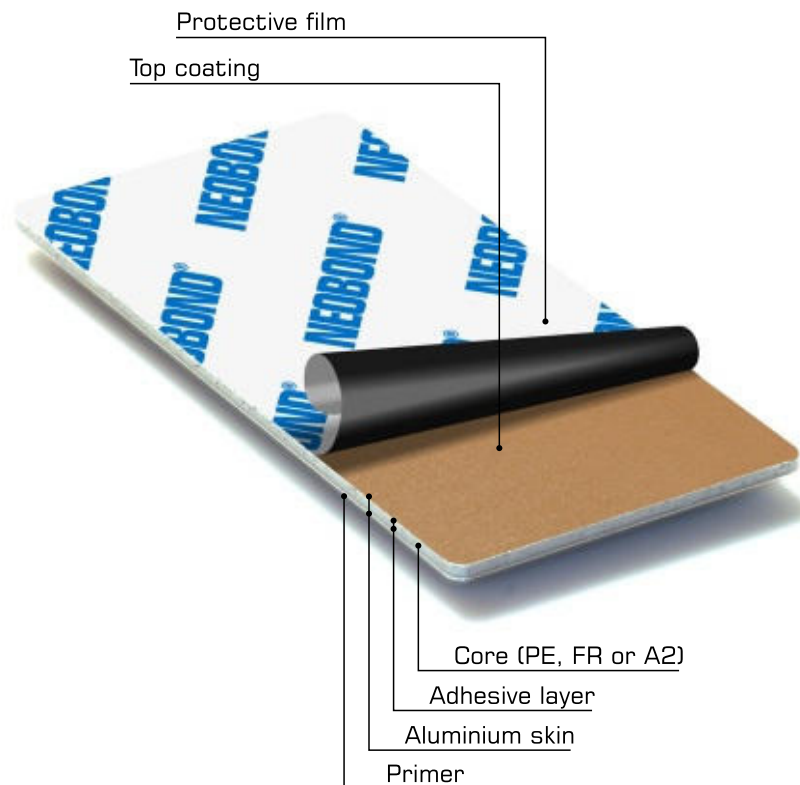
WCR-7843 Deep grey



WCR-7841 Pebble grey

CERAMIC

- NEOBOND Ceramic panels provide a warm clay's charming texture and an earthy look. Its calm tones give beautifully aged natural appearance, creating a perfect contrast with other colours and textures of the facades, as well as providing a unique architectural style. Ceramic look panels are the best solution for restoring ancient concepts in modern architectural approach by creating ideal combination of vintage and contemporary styles.



-
- Each colour in current colour chart is represented for display purposes only. Please check the actual colour accordance to your project with our sample.
 - Colour differences may occur between panels from different production batches. The entire required amount of material for the project must be ordered as one batch.
 - To avoid differences in gloss and reflection, composite panels have to be installed in the same direction, as indicated by the arrows on the protective film.
 - Product series available as NEOBOND, NEOBOND/FR, NEOBOND/A2 (colour variation may occur between different product types, due to different production processes. It is recommended not to mix different product types, if colour consistency is required).

NEOBOND®

Aluminium Composite Panel

Unlimited Possibilities

**Williams Ltd., 5 Zemitana str.,
Riga LV-1012, Latvia
Phone: (+371) 67843779;
Mobile: (+371) 26396890;
e-mail: info@williamscomposite.com
<http://williamscomposite.com>**