

METAL



NEOBOND[®]

WILLIAMS COMPOSITE MATERIALS

COPPER



Copper Natural



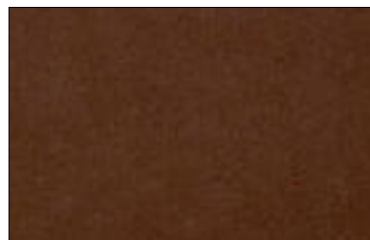
Copper Coated



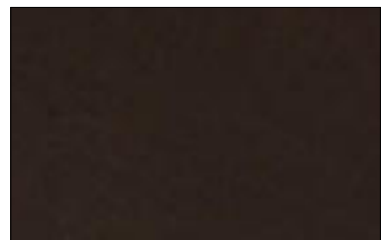
Copper Vintage



Copper Brown Longline



Copper Brown Oxid



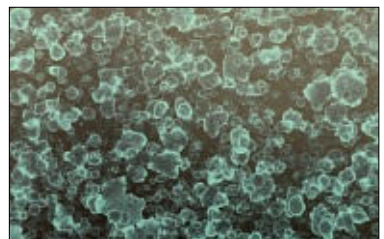
Copper Dark Brown Oxid



Copper Patina Green



Copper Patina Blue



Copper Patina Drops

BRASS



Brass Polished



Brass Longline



Brass Dark Longline

STAINLESS STEEL



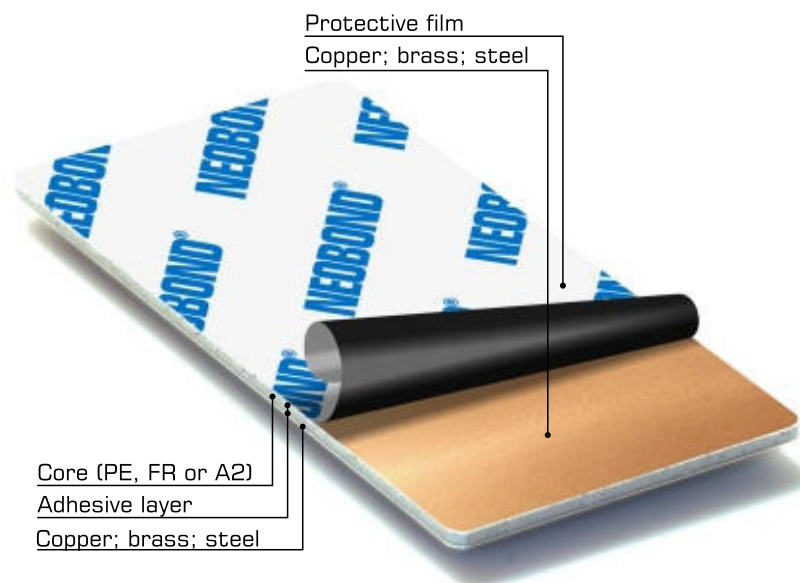
Stainless Steel Brushed



Stainless Steel Mirror

METAL

- NEOBOND Copper are exquisite and fascinating cladding panels covered with natural copper, presenting a variety of design options and leaving a lot of opportunities for creativity. Over the time copper weathers naturally from shiny red to dark brown, and then to an elegant blue-green colour or patina. For those who wants to speed up natural ageing processes, product range includes factory-applied surface treatments to get various kinds of copper oxidation and patination.
- NEOBOND Brass composite panels are covered with elegant golden layer of natural brass, which will be beautifully changing after it is revealed to atmosphere. It's natural weathering process will be gradually developing its colour from sophisticated golden to brown and purple while finally developing a completely brown tone.
- NEOBOND Stainless Steel panels are covered with shiny layer of natural stainless steel, which is a perfect solution for sustainable design and contemporary concept in architecture. NEOBOND Stainless Steel composite panels can be an excellent choice not just for a large and extensive buildings, but also for a smaller structures. In combination with other textures, such as stone or wood, stainless steel panels can provide an exclusive and chic appearance to any facade.



-
- Each colour in current colour chart is represented for display purposes only. Please check the actual colour accordance to your project with our sample.
 - Colour differences may occur between panels from different production batches. The entire required amount of material for the project must be ordered as one batch.
 - To avoid differences in gloss and reflection, composite panels have to be installed in the same direction, as indicated by the arrows on the protective film.
 - Product series available as NEOBOND, NEOBOND/FR, NEOBOND/A2 (colour variation may occur between different product types, due to different production processes. It is recommended not to mix different product types, if colour consistency is required).

NEOBOND®

Aluminium Composite Panel

Unlimited Possibilities

**Williams Ltd., 5 Zemitana str.,
Riga LV-1012, Latvia
Phone: (+371) 67843779;
Mobile: (+371) 26396890;
e-mail: info@williamscomposite.com
<http://williamscomposite.com>**